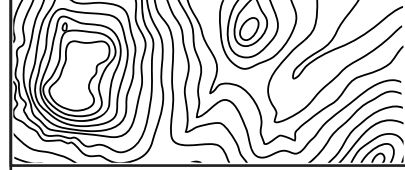
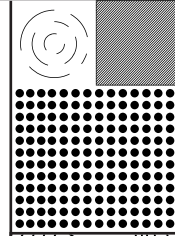


MINOR IN LANDSCAPE ARCHITECTURE CURRICULUM

The Minor in Landscape Architecture gives students interested in the design of the built environment the chance to engage in a course of study that includes landscape architectural history and design, landscape ecology and planning.

Elective coursework addresses site and landscape planning issues and explores the ways in which designed landscapes can educate and inspire communities toward environmental health and cultural identity.



UNITS

COURSE

MINOR CORE

3	LAR 241	History and Theory of Landscape Architecture
4	LAR 420	Plant Materials
3	LAR 423	Landscape Ecology
10		

MINOR ELECTIVES

3	SBE 201	Sustainable Design and Planning
3	PLG 408	Climate Action Planning
3	PLG 458	Geodesign Studio
3	LAR 440	History, Theory and Contemporary Landscape Architecture
3	LAR 450	Green Infrastructure
4	LAR 470	Introduction to GIS for Planning and Landscape Architecture

NOTES

The Minor in Landscape Architecture consists of six courses (19-20 units).

Three courses in the minor core are required, for a total of 10 units.

Three courses from the minor electives are required to complete the minor, for a minimum of 9 units.

CAPLA.ARIZONA.EDU/LA-MINOR

**CAPLA.ARIZONA.EDU/
ADVISING**

UPDATED 09/22/2023